

Catalog Manager for IMS

View and report on the information in the IMS Catalog

PRODUCT DESCRIPTION

The IBM® IMS™ catalog is a system database that stores metadata about your databases and applications. Catalog Manager for IMS enables you to view IMS catalog content, report on the control block information in the IMS catalog, and create jobs to do DBDGENs, PSBGENs, and ACBGENs to populate the catalog. If you own a BMC product for IMS, Catalog Manager for IMS is available to you at no charge.

BUSINESS CHALLENGE

The IMS catalog introduces a new way of managing database definitions (DBDs) and application programs' view of the IMS data (PSBs). Before the catalog, the DBD defined a subset of the fields in a database record, and the remaining fields were defined in the application program (in a COBOL copybook or in a PL/I or C-include file). Bringing all of this information together simplifies and streamlines the usage of IMS. IBM has stated that at some point in the future, the IMS catalog will be required and must be set up to support IMS-managed ACBs. Because the catalog is a new concept for IMS users, you need a way to easily manage the catalog.

BMC SOLUTION

Catalog Manager for IMS makes it easy for you to view and understand the database definitions and segment specification information in your IMS catalog. It makes it easy to verify that the data in the catalog is correct and ready to use for IMS-managed ACB actions. Catalog Manager for IMS integrates seamlessly with the BMC DBA Toolkit for IMS to simplify catalog management. Catalog Manager for IMS provides cross-reference reports, allows submission of IMS commands, and enables generation of DBDGEN, PSBGEN, and ACBGEN job streams.

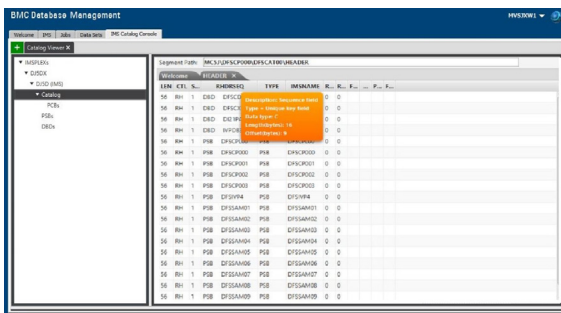
KEY FEATURES

Catalog Manager for IMS allows you to easily and effectively view and report on information in the IMS catalog.

- Easily view catalog content and understand descriptions with pop-up column descriptions
- Produce cross-reference and audit reports
- Create execution jobs for DBDGENs, PSBGENs, and ACBGENs to populate your catalog

KEY BENEFITS

- Provides basic catalog management at no additional cost
- Integrates with existing BMC tools
- Verifies that your catalog contains the correct information needed for IMS-managed ACBs
- Compares and audits catalog and DBDLIB, PSBLIB, and ACBLIB information



◀ Catalog Manager Catalog Data

PRODUCT DETAILS

Catalog Viewer: The catalog viewer helps you understand what information is loaded in the catalog by selecting segments and displaying their contents. It displays information in a tabular format with descriptive column headings. You can hover over any column heading to see a detailed description of the column and its format, and you can sort a column to view information in alternate sequences.

Catalog Reports: To help you verify that the information in the catalog is current and correct, Catalog Manager for IMS provides extensive integrity checking, including:

- DBDAUDIT reports that display information about DBD definitions and flags inconsistencies, such as a DBDGEN date later than the ACBGEN date, an ACB without a corresponding DBD, and IMS release differences in the ACBLIB and DBDLIB
- Cross-reference control block reports to provide information about the relationships between the input control blocks, such as the names of PSBs that refer to a DBD
- Comparison reports that flag the added, changed, or deleted source statements
- DBD reports that provide information about the DBD control block

JCL Generation: Catalog Manager helps you load, update, and purge information in your IMS catalog using an interactive interface to generate PSB, DBD, and ACB jobs to update these libraries and populate the IMS catalog. You can populate the catalog directly from the ACBLIB and create jobs to purge unneeded catalog entries.

IMS Command Facility: You can issue commands from within Catalog Manager for IMS. You don't need to switch to a different product simply for IMS command processing.

SPUFI Processor: The SQL Processor Using File Input (SPUFI) capability allows you to quickly enter or copy/paste SQL statements into Catalog Manager for IMS. You can submit the SQL query and view the results. The SPUFI processor enables you to test SQL to verify that it produces the desired results and to update your IMS catalog object entries using SQL.

Integration with DBA Toolkit: Catalog Manager for IMS is fully integrated with the BMC IMS DBA Toolkit, which provides a single interface to all the IMS databases in your enterprise. With each BMC reorganization utility execution, information about what maintenance has been performed (and when) on a database is automatically recorded and accumulated into monthly and yearly reports so you can analyze trends. Interactive charts and tables display current state and historical information about jobs, databases, database partitions, data sets, and segments.

FOR MORE INFORMATION

To learn more about BMC MyIT, please visit myit.bmc.com

About BMC

BMC delivers software, services, and expertise to help more than 10,000 customers, including 92% of the Forbes Global 100, meet escalating digital demands and maximize IT innovation. From mainframe to mobile to multi-cloud and beyond, our solutions empower enterprises of every size and industry to run and reinvent their businesses with efficiency, security, and momentum for the future.

BMC – Run and Reinvent

www.bmc.com



BMC, BMC Software, the BMC logo, and the BMC Software logo, and all other BMC Software product and service names are owned by BMC Software, Inc. and are registered or pending registration in the US Patent and Trademark Office or in the trademark offices of other countries. All other trademarks belong to their respective companies. © Copyright 2019 BMC Software, Inc.

