

Control-M

Big Data

Simplify workflow orchestration

End-to-end visibility – Manage data workflows through a simple drag-and-drop interface that provides universal visibility and control for all your workflows

Rich ecosystem support – Apache® Spark™, Apache® Oozie™, EMR, Snowflake, Azure Data Factory, Redshift and others

Improved reliability – Detects and prevents potential problems with forecasting features and predictive analytics; restarts can be attempted automatically without requiring human intervention

Embedded in your DevOps toolchain – Using a Jobs-as-Code approach, data workflows can be tested, versioned and deployed within a CI/CD toolchain

BENEFITS

Execute fast and accurate implementation by replacing manual scripting with automated workflow orchestration and data integration, dramatically shortening development time and preventing coding errors

Improve business focus instead of spending time building connectors and coordinating multiple tools

DESCRIPTION

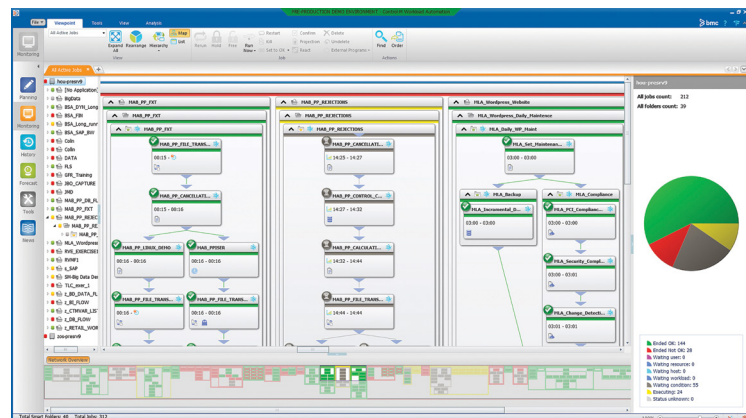
To go from raw data to actionable intelligence, you need an enterprise-ready workflow orchestration product that can accelerate time to insights. Data platforms rely heavily on data movement and integration with the rest of your application ecosystem. Control-M helps you orchestrate and automate complex data pipelines across hybrid and multi-cloud environments and leading technologies to ensure consistent service levels.


BUSINESS CHALLENGE

Every day you ingest vast amounts of data from various sources, such as transactional systems of record, operational databases, logs, applications, sensors and devices. The data must be synchronized, ingested, consolidated, cleansed, and analyzed to give the actionable intelligence your business needs. Many disparate technologies are used to ingest, store, process and analyze the data. Orchestration of such workflows is difficult to build, and development is typically done with multiple disconnected scripts, which are time consuming to develop and maintain. This complexity limits the speed at which data applications can be delivered, making it difficult to adapt to the challenges posed by accelerated applications, disparate data, and increasingly diverse infrastructure.

BMC SOLUTION

With Control-M, you can orchestrate data workflows on premises and in the cloud, while managing complex workflow dependencies during ingestion and processing of data in many modern data platforms such as Amazon EMR, Azure Data Factory, Google Big Query, Spark, Hadoop, and Snowflake. You get an end-to-end view of data pipelines at every stage, from ingestion and processing, to storage and analytics.



 Control-M makes it easy to view, manage, and understand big data and associated workflows.

CAPABILITIES

Powerful, simple interface: Users create and manage workflows via the interfaces they prefer. Graphical interfaces minimize the knowledge required of scheduling or platforms like Hadoop. Jobs are built and scheduled through wizard-like forms that include dropdown menus to simplify selection of the correct parameters and prevent input errors. Command line and an as-code approach enable developers to minimize scripting. Interfacing with enterprise applications, scheduling jobs, and monitoring their status are just as easy.

Comprehensive support: Control-M can orchestrate workflows and integrate data from multiple sources. Supported solutions and formats include:

- **Big Data platforms and technologies** such as Hadoop, AWS EMR, Azure HDInsights, Azure Data Factory, Spark, Oozie, Impala, DistCp, Pig™, Hive™, Sqoop™, Tajo™, Streaming, Hive Server 2, and Hadoop Distributed File System (HDFS) operations
- **Enterprise Data Warehouses (EDW)** – AWS Redshift, Informatica®, IBM® InfoSphere® DataStage®, IBM DB2, Microsoft® SQL Server™, Oracle® databases, and others
- **Technologies** – FTP, sFTP, Web Services, Enterprise Java Beans (EJB), and Java® applications
- **ETL functions and business intelligence systems** – Informatica, IBM® Cognos®, SAP® BusinessObjects™, Oracle® Business Intelligence, and SQL Server SSIS
- **RDBMS** – Oracle, Sybase®, DB2/UDB, SQL Server, and PostgreSQL®
- **Cloud services** – AWS Lambda, Step Functions, Batch, SQS, SNS and S3 Azure Logic Apps, Functions and Batch
- **Backup systems** – Symantec® NetBackup™ and IBM® Tivoli® Storage Manager
- **Operating systems** – Microsoft® Windows®, UNIX®, Linux®, IBM® z/OS®, IBM® iSeries®, Tandem®, and OpenVMS

Self-service: Users can monitor and manage their own workflows from any browser-based device, including mobile iOS® and Android™ devices

FOR MORE INFORMATION

To learn more please visit bmc.com/it-solutions/control-m-big-data

About BMC

From core to cloud to edge, BMC delivers the software and services that enable over 10,000 global customers, including 84% of the Forbes Global 100, to thrive in their ongoing evolution to an Autonomous Digital Enterprise.

BMC—Run and Reinvent

www.bmc.com



BMC, the BMC logo, and BMC's other product names are the exclusive properties of BMC Software, Inc. or its affiliates, are registered or pending registration with the U.S. Patent and Trademark Office, and may be registered or pending registration in other countries. All other trademarks or registered trademarks are the property of their respective owners. © Copyright 2020 BMC Software, Inc.



* 4 8 8 9 3 4 *