



What's New in BMC Control-M 8

The power of simple

Key Benefits

- » Reduce the cost of managing workload automation by simplifying the user interface
- » Streamline the most common functions required to manage jobs by combining all required activities into a single tool
- » Enable constituents in workload automation to collaborate through a virtual workspace
- » Increase the throughput of the scheduling engine to reduce the server configuration required to run workload automation
- » Eliminate the requirement for maintenance windows to upgrade agent components by using "on the fly" agent upgrade
- » Increase system responsiveness and job analysis accuracy by leveraging operating system enhancements

Business challenge

Users are facing the contradictory trends of increasing need to manage more and more workload business services, while also having less and less time to devote to learning about the complexities of workload automation tools and management disciplines. As volume increases and the time to dedicate to managing workload decreases, organizations are finding that workload automation costs are increasing and the quality of service they can deliver is suffering.

The BMC solution

BMC Control-M 8 radically simplifies the management of workload automation with a completely re-engineered user interface that is designed to be immediately familiar to experienced and novice users alike, offering enhancements that reduce the cost and effort of managing the workload automation infrastructure.

Simple, familiar, and modern user interface

The BMC Control-M 8 user interface is made up of domains that organize the major functional areas of user activity. All domains have a consistent multi-tab home page, collapsible and re-sizable panes, a context-sensitive ribbon, a preview pane, and a multi-tab message area. Anyone familiar with modern Windows applications will feel immediately comfortable with this layout and its controls.

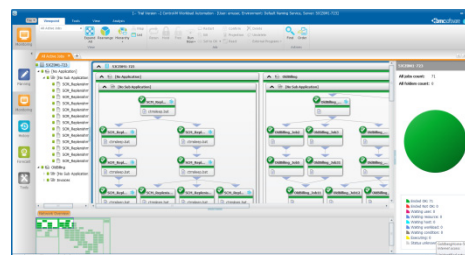


Figure 1. BMC Control-M 8 domain layout.

The layout of most forms has been revamped to make commonly used and mandatory attributes prominent and easily accessible, while making optional and advanced fields accessible via simple links or by expanding collapsed sections. Additionally, much of the terminology has been revised to use more common and descriptive phrases, such as "Folder" instead of "Table" and "Output" instead of "Sysout."

Building job flows

The Planning Domain is used to build and modify job flows. In addition, the Workspace concept has been extended to support collaboration among multiple stakeholders in the construction of workload flows. Workspaces are given a name, description, and owner and are now managed in the Job Definition Database. Standard authorizations control access to workspaces and any authorized user can take ownership of a workspace to make any required modifications.

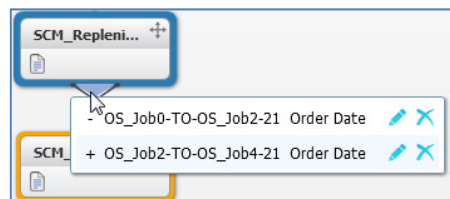


Figure 2. Editing prerequisite conditions

The facilities for building flows has been enhanced and simplified. A Job Palette offers all available job types that can be selected and dragged onto the job design canvas. The palette contains both standard job definitions as well as user-created templates. The job automatically inherits folder and data center attributes as it is dropped onto the canvas. Predecessor / Successor relationships are created with "click and connect"

actions. If the target job to be connected is outside the viewing area, the canvas is automatically scrolled as the pointer is moved beyond the visible job map.

Highlights

- » Enhancements to BMC Control-M/Server submission, tracking, and analysis processes improve throughput.
- » Agents can be upgraded without scheduling any down time.
- » Agentless scheduling now supports BMC Control-M utilities.
- » Job tracking on z/OS now uses ENF for quicker job status tracking.
- » JOBRC JCL Statement is now supported.
- » BMC Control-M now exploits zIIP specialty processors.

Job relationships can be edited with simple dialogs that pop up when job objects are selected. Work in progress can be saved even if jobs are not syntactically valid. Workspaces can be validated and forecasted using either production calendars or the versions that are checked out and being modified.

When the jobs are completed, the workspace is checked in and automatically pushed to the appropriate data centers, where the jobs are ready to execute without any additional user actions.

Monitor, history, forecast, and tools

These additional domains provide all of the facilities required to monitor and manage BMC Control-M jobs. Consistent layout, ribbon structure, and graphical controls make them easy to navigate. In the Monitor domain, the home page makes all available viewpoints easily accessible, and the expanded navigational capabilities, such as a case-insensitive Find, make it easy to manage hundreds — or hundreds of thousands — of jobs.

Powerful infrastructure

BMC Control-M/Server processes have been rewritten to leverage multi-threading to deliver significantly greater throughput for job submission, selection, and analysis. Organizations can now consider consolidating multiple BMC Control-M/Server instances, thus reducing their hardware footprint.

Although agent upgrades take only a matter of seconds, negotiating maintenance windows with multiple application owners has posed significant challenges. Zero Outage Agent Upgrade allows product administrators to deploy new agent versions without having to introduce an outage and thus avoid having to schedule a maintenance window.

Organizations can now use BMC Control-M utilities with agentless scheduling. BMC Control-M agents automatically deploy a utilities “proxy” that intercepts the function request and sends the request to the BMC Control-M agent, which performs the requested function and then passes the output of the request back to the proxy for inclusion in the job output.

BMC Control-M also has leveraged z/OS® platform enhancements to deliver new and improved functionality. The Event Notification Facility (ENF) has been enhanced to generate an event for local job termination and remote (NJE) job arrival. These events are used to eliminate the need to poll JES for these events, thus recognizing job completion more efficiently. Another z/OS enhancement is the addition of the JOBRC statement, which can modify how job success is determined. BMC Control-M 8 supports all JOBRC options.

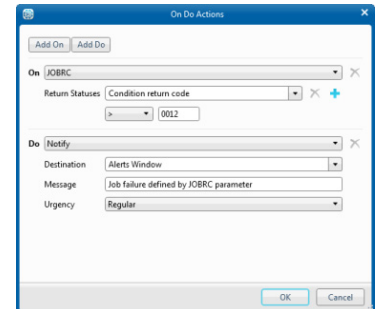


Figure 3. Graphical support for JOBRC

BUSINESS RUNS ON I.T. I.T. RUNS ON BMC SOFTWARE.

Business runs better when IT runs at its best. That's why more than 20,000 IT organizations – from the Global 100 to the smallest businesses – in over 120 countries rely on BMC Software (NASDAQ: BMC) to manage their business services and applications across distributed, mainframe, virtual and cloud environments. With the leading Business Service Management platform, Cloud Management, and the industry's broadest choice of IT management solutions, BMC helps customers cut costs, reduce risk and achieve business objectives. For the four fiscal quarters ended June 30, 2012, BMC revenue was approximately \$2.2 billion.

Proven enterprise workload automation solution

BMC Control-M 8 extends the capabilities of BMC's market-leading enterprise workload automation solution. In addition to the features described above, BMC Control-M:

- » Reduces the cost of managing workload automation with a single point of control
- » Increases the quality of services delivered by IT with extensive service level management for workload automation
- » Empowers business users to make better and quicker decisions with simple and intuitive, yet fully audited, self service (via a web browser or iOS device)
- » Delivers flexibility and reduces operating and capital expenses with dynamic resource management that leverages virtualization and cloud computing
- » Provides comprehensive auditing and reporting for the most demanding regulatory and compliance requirements

For more information, please visit www.bmc.com/control-m.