

BMC AMI Command Center for Security

Real-time Security Monitoring, Dashboards & Alerts for z/OS

BMC AMI Command Center for Security is an affordable Security Information & Event Management (SIEM) system especially designed and preconfigured for use by z/OS security administrators and system programmers. It provides point-and-click functionality from a standard web browser into z/OS security and operational events. AMI Command Center for Security provides dashboard views, event message correlation, and can send text messages as alerts of security events generated from z/OS.

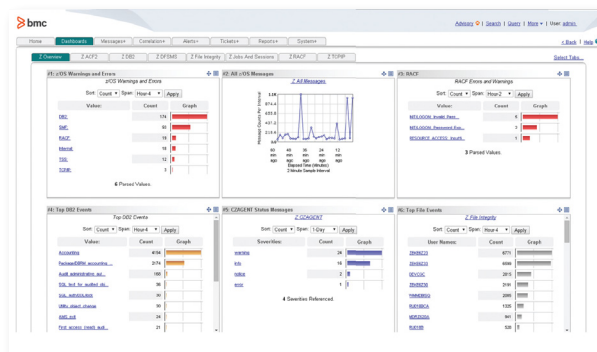
How does it work? The AMI Command Center for Security for z/OS dashboard collection is a major advancement over the z/OS green screen most familiar to mainframe users. This mainframe SIEM system delivers a clean, web-based GUI with high-speed search, and the capability to drill down to z/OS security messages with point-and-click functions. The solution is agent-based, residing on one or more LPARs, and collects a full range of mainframe security data from facilities like RACF, CICS, DFSMS, DB2 accesses/failed access attempts, and z/OS console messages, then presents the data in AMI Command Center for Security dashboards.

The AMI Command Center for Security for z/OS is based on technology derived from BMC's leading SIEM Correlation Server log management product. AMI Command Center for Security correlation engine determines if messages are important and, in real time, alerts appropriate personnel of any security issues.

For integration, the API for AMI Command Center for Security is certified for both IBM® Security QRadar® and HP ArcSight and BMC has a long-standing partnership with McAfee that includes several joint deployments. Additional field integrations have been completed with Splunk®, LogRhythm, Dell SecureWorks, and other well-known SIEM brands.

EXTENDED MAINFRAME VISIBILITY VIA STANDARD WEB BROWSER

- **z/OS Dashboard Views:** Data can be depicted using a suite of preconfigured dashboards that show mainframe activity related to system-wide security.
- The software comes with out-of-the-box correlation rules for monitoring a multitude of z/OS security events, including RACF, CICS, DB2 and DFSMS.
- **High-speed Mainframe Message Search:** Mainframe security messages are collected by BMC AMI Command Center for Security and indexed for rapid search



Additionally, the BMC AMI Command Center for Security for z/OS can act as a general-purpose collector and SIEM Syslog forwarder in a larger enterprise SIEM strategy. AMI Command Center for Security can simply provide live mainframe security data to key resources within your organization – that may or may not have access to your enterprise SIEM – utilizing a standard web browser. The solution compliments the functionality that exists within your SIEM system, expanding your team’s visibility to data currently generated from your z/OS.



FOR MORE INFORMATION

For more information on our products, please visit bmc.com/ami-security.

About BMC

BMC helps customers run and reinvent their businesses with open, scalable, and modular solutions to complex IT problems. Bringing both unmatched experience in optimization and limitless passion for innovation to technologies from mainframe to mobile to cloud and beyond, BMC helps more than 10,000 customers worldwide reinvent, grow, and build for the future success of their enterprises.

www.bmc.com



BMC, BMC Software, the BMC logo, and the BMC Software logo, and all other BMC Software product and service names are owned by BMC Software, Inc. and are registered or pending registration in the US Patent and Trademark Office or in the trademark offices of other countries. All other trademarks belong to their respective companies. © Copyright 2018 BMC Software, Inc.

