

# Control-M on the Cloud

Accelerate digital business automation in hybrid and multi-cloud environments

## PRODUCT DESCRIPTION

Control-M integrates, automates and orchestrates application workflows across on-premises, private and public cloud environments, so your jobs get delivered on time, every time. With a single unified view you can orchestrate all your workflows, including file transfers, applications, data sources and infrastructure with a rich library of plug-ins. Easily provisioned in the cloud, Control-M leverages the ephemeral capabilities of cloud-based compute services.

## BUSINESS CHALLENGE

Companies today are increasingly challenged with delivering digital services faster than ever before. This need for speed has driven companies to shorten the time for delivering the applications that power modern digital services. Public cloud providers have innovated to provide services that allow provisioning of platform and infrastructure in virtually a single-click operation, with unmatched scalability and flexibility. With infrastructure provisioning down to minutes, companies are now looking for ways to achieve the same level of agility to install and configure applications that need to run on the cloud platform.

## BMC SOLUTION

Control-M simplifies workflow orchestration across hybrid cloud environments. Configure and run on Amazon Web Services\* (AWS), and Microsoft\* Azure\* with fast and easy provisioning and with native support for AWS Lambda, AWS Step Functions, AWS Batch, Amazon S3 and AWS SQS and SNS. Users get full Control-M capabilities, including file transfer management, plus the elasticity, scalability, and high availability of leading cloud platforms.

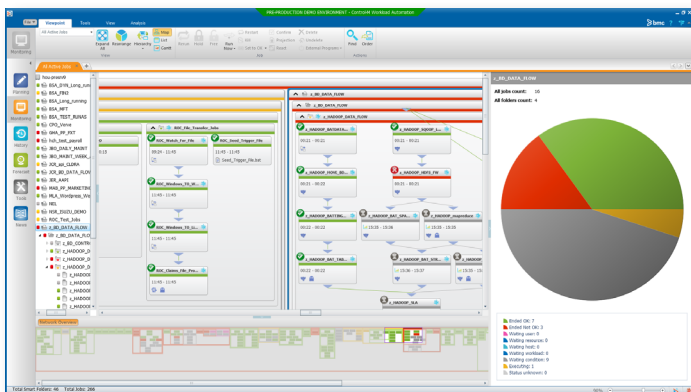
## KEY FEATURES

Running Control-M on cloud platforms increases economies of scale, speed, and agility.

- **Automated provisioning** – Organizations that want to run Control-M on AWS or Azure can have it configured and ready in minutes
- **Complete workflow orchestration functionality** – All Control-M features for workflow development, scheduling, management, and integration can run in the cloud
- **Native support** for AWS Lambda, AWS Step Functions, AWS Batch, Amazon S3 and AWS SQS and SNS. Easy and intuitive access to additional AWS services via Control-M Application Integrator
- **Security compliances** – Comply with restricted standards such as AWS Direct Connect, VPC, and VPN

## KEY BENEFITS

- **Installed and configured in minutes** – Safely provision Control-M on the cloud in minutes
- **Fully scalable** – Enterprises can save on storage and infrastructure costs while getting all the capacity they need on demand
- **Simplified management** – High availability, database maintenance, and other time-consuming tasks become the cloud provider’s responsibility, freeing enterprise staff for more productive activity
- **Run Control-M on leading public cloud platforms**—at the speed of business. Control-M environments are provisioned on cloud platforms within minutes



## PRODUCT DETAILS

- **Amazon Web Services support:** Quick setup and deployment of Control-M core components via AWS Marketplace include EC2 machine and Postgres RDS.
- **Integration with AWS services:** Native support for AWS Lambda, AWS Step Functions, AWS Batch, Amazon S3 and AWS SQS and SNS. Easy and intuitive access to additional AWS services via Control-M Application Integrator.
- **Integration with Microsoft Azure services:** Native support for Azure Logic Apps, Azure Functions, and Azure Batch. Easy and intuitive access to additional Azure services via Control-M Application Integrator.
- **Azure support:** Run Control-M on the Azure public cloud using a simple VM extension.
- **Multi-cloud support:** Control-M components can be deployed on different private and public cloud vendors, such as AWS and Azure.
- **Hybrid cloud support:** Orchestrate workflows across on-premises datacenters, hybrid, and public, private, and multi-cloud environments.
- **Support diverse configurations:** Start from applications (agents) to Control-M fully deployed on the cloud.
- **Full Control-M functionality:** Control-M on the cloud offers all features of Control-M. You get an enterprise-class workflow orchestration product for complete lifecycle management without having to worry about key configuration, provisioning, and infrastructure maintenance tasks.

---

### **START YOUR DIGITAL TRANSFORMATION TODAY**

To learn more about Control-M on the cloud, please visit [bmc.com/control-m-cloud](https://bmc.com/control-m-cloud)

## About BMC

BMC helps customers run and reinvent their businesses with open, scalable, and modular solutions to complex IT problems. Bringing both unmatched experience in optimization and limitless passion for innovation to technologies from mainframe to mobile to cloud and beyond, BMC helps more than 10,000 customers worldwide reinvent, grow, and build for the future success of their enterprises.

[www.bmc.com](https://www.bmc.com)



BMC, BMC Software, the BMC logo, and the BMC Software logo, and all other BMC Software product and service names are owned by BMC Software, Inc. and are registered or pending registration in the US Patent and Trademark Office or in the trademark offices of other countries. All other trademarks belong to their respective companies. © Copyright 2019 BMC Software, Inc.



\* 4 8 8 9 4 0 \*