

Control-M Managed File Transfer

Securely automate file transfers from a central interface to improve visibility and control

PRODUCT DESCRIPTION

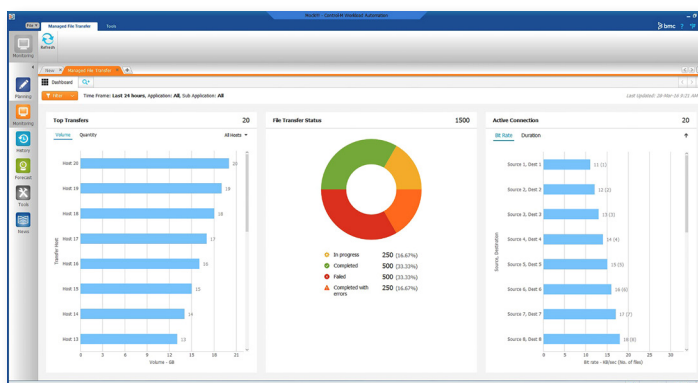
Control-M Managed File Transfer enables you to intuitively build, schedule, and manage file transfers, just like any other batch job. Combining batch jobs and file transfers in a single system prevents data errors and job failures while improving visibility and control.

BUSINESS CHALLENGE

Modern enterprise operations are highly dependent on file transfers between different applications and systems. File transfers are typically managed through a combination of scripting, proprietary applications, and manual intervention. Each approach has its own risks and support requirements, and **using multiple methods prevents organizations from having fully integrated, automated operations.** These limitations prevent complete visibility into overall activity and are often the cause of failed file transfers.

BMC SOLUTION

Control-M delivers the next wave of IT automation—Digital Business Automation—moving beyond traditional workload automation and adapting to modern IT technologies and processes. **Control-M Managed File Transfer puts you in control of file transfers with an intuitive graphical user interface** to guide you through job definitions and ensure transfers are associated with a comprehensive automated workflow or process when appropriate. With Control-M Managed File Transfer, you get instant visibility into the status of internal and external file transfers with a dashboard view, enhanced security with encryption options, and reduced risk of downtime with automated monitoring and recovery features.



KEY FEATURES

Control-M Managed File Transfer securely automates enterprise file transfers, maintains data integrity, and provides a single view of all activity.

- Centralizes and automates internal and external file transfers and simplifies scheduling
- Aligns file transfers with business processes
- Provides instant visibility into the status of file transfers with an operational dashboard and file transfer search
- Reduces TCO with automatic deployment from a central interface and built-in file transfer server

KEY BENEFITS

- Ensures compliance with successful file transfers that help ensure data integrity
- Improves service levels by eliminating lag time between file transfer and subsequent processing steps
- Reduces risk by automatically restarting unsuccessful jobs from the point of failure
- Provides a single point of control for the enterprise by managing internal and external file transfers inline with other related workloads

- ◀ Control-M Managed File Transfer provides instant visibility into various aspects of the file transfer environment, including activity on specific endpoints, throughput levels across active file transfer connections, and an overall status view of all file transfers.

PRODUCT DETAILS

Advanced search capabilities: From the product client application or from a self-service, web-based interface, users can easily find details of a specific file, without needing to know the associated name of the job that transferred the file.

File transfer and business processes alignment: After a file transfer operation completes, the dynamic scheduling capability automatically updates the business service and initiates any downstream jobs, eliminating the need for manual intervention or complicated scripting. Automated integration ensures that any related processes are triggered on schedule and that service levels are met.

File transfer security: Files can be transferred securely with FTP, secured FTP (SFTP), FTP over SSL, HTTP/S, or PGP encryption, while also being FIPS-compliant.

Automatic recovery: When network failures or outages cause a file transfer to fail, automatically recover and restart the failed transfer from the point of failure or from the beginning. If multiple files are transferred within a single job and one file transfer fails, recover or restart only the file or files that failed. Automated monitoring and scheduling features ensure that dependent jobs can automatically adjust to the change in the scheduled processing time.

Centralized configuration: Administrators can deploy and upgrade Control-M Managed File Transfer on every endpoint from a centralized configuration interface. They can also use the interface to manage the connection profiles to the endpoints and configure various optional settings.

Built-in file transfer server: Eliminate the need to manually configure file transfer settings on each endpoint or to use third-party file transfer servers for Microsoft® Windows® platforms. The file transfer server supports secured transfer and authentication and can be managed from the central configuration interface for all endpoints.

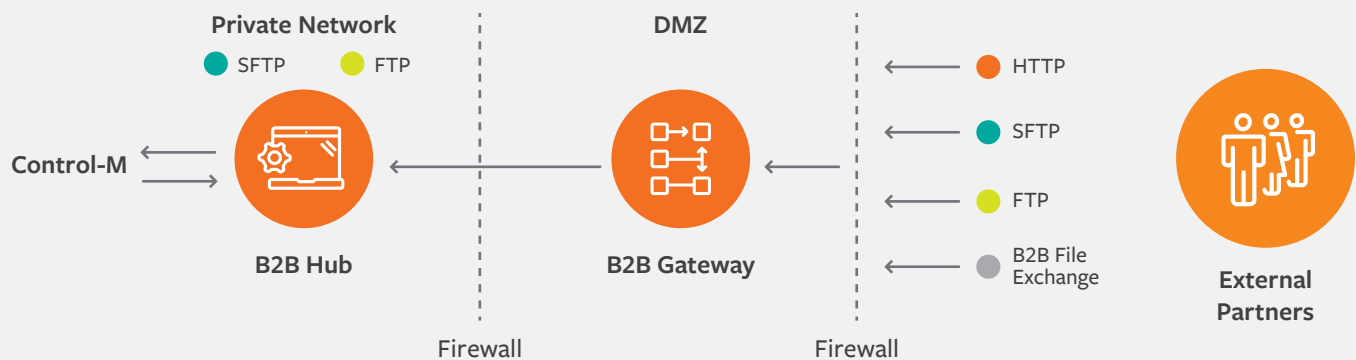
External capabilities: Provides a secure way for you to manage file transfers with external business partners in your Control-M environment.

Components include:

- **B2B Hub:** File transfer server that manages external file transfers and allows for virtual users and folders that can be associated with external business partners.
- **B2B Gateway:** Listens for incoming SFTP, FTPS, and HTTP/S connections from external accounts.
- **B2B File Exchange:** Web-based interface that external business partners can use to connect to the B2B Gateway to upload and download files.

FOR MORE INFORMATION

To learn more about how Control-M Managed File Transfer can help you improve visibility and control, visit bmc.com/mft



BMC is a global leader in innovative software solutions that enable businesses to transform into digital enterprises for the ultimate competitive advantage. Our Digital Enterprise Management solutions are designed to fast track digital business from mainframe to mobile to cloud and beyond.



BMC, BMC Software, the BMC logo, and the BMC Software logo, and all other BMC Software product and service names are owned by BMC Software, Inc. and are registered or pending registration in the US Patent and Trademark Office or in the trademark offices of other countries. All other trademarks belong to their respective companies. © Copyright 2018 BMC Software, Inc.

