

# TrueSight Vulnerability Management

Eliminate risks and blindspots to reduce the attack surface with an action-focused solution

## PRODUCT DESCRIPTION

TrueSight Vulnerability Management, formerly known as BMC SecOps Response Service, extends the power of endpoint management systems, such as TrueSight Server Automation, TrueSight Network Automation, and Microsoft SCCM, to provide IT operations and security teams the data they need to prioritize and remediate threats based on potential impact to the business. Its native integration to popular scanning tools, such as Rapid7, Tenable, and Qualys, enables teams to quickly consume scans and automatically tie vulnerabilities to known remediations.

## BUSINESS CHALLENGE

One of the largest drivers of the inability to defend organizations against security threats is still the lack of integration and coordination between security and operations teams. Security teams scan for vulnerabilities and then deliver that information to the operations team for action. **However, that information frequently lacks the business or operational context the IT operations team needs to take or prioritize action.** Per the 2018 Ponemon/BMC study, fifty-six percent of respondents agree that there is tension between IT security and IT operations because of a lack of alignment of their different priorities.

## BMC SOLUTION

TrueSight Vulnerability Management prioritizes risks and reduces your overall attack surface by providing operations teams with prescriptive and actionable data to address vulnerabilities based on perceived impact and policy. It also offers security teams a transparent view into operational plans by providing visibility into planned actions, predictive SLAs, and burndown views. Through integration with BMC Discovery, teams can identify application context and blindspots—systems previously unknown or unmanaged—and make adjustments.



## KEY FEATURES

TrueSight Vulnerability Management provides security teams and operations teams unprecedented visibility into their environments' threat stature for efficient remediation of risks.

### Security

- Visualize how quickly threats will be eliminated with graphical views of planned operations actions, predictive SLAs, and burndowns
- Identify blindspots in the security process and make adjustments

### Operations

- Focus on items of highest priority and highlight areas of concern
- Import scans and instantly tie vulnerabilities to remediation actions
- Make exceptions to schedules and maintenance windows, and decide what you want to patch and when
- Make security data actionable

## KEY BENEFITS

- Build security and compliance practices that are flexible, scalable, and agile
- Protect uptime and maintain stability, while nimbly building the right defenses
- Increase security by shoring up defenses through analytics, operational planning and automated remediation

Use the Security Dashboard to quickly see the status of vulnerabilities.

## PRODUCT DETAILS

**Powerful Dashboards:** Manage risks using TrueSight Vulnerability Management dashboards designed specifically for operations and security users. Quickly prioritize remediation activities based on policy and vulnerability scores that you assign. Identify performance trends and manage vulnerabilities through their lifecycle.

**Data Export for Deeper Analysis:** Export the data driving the dashboards to develop and share custom reports and meet audit requirements.

**Vulnerability Exclusions:** Exclude scan information known to be incorrect from affecting your analysis and reporting.

**Operational Scheduling:** Focus only on the vulnerabilities that need attention by filtering out activities that have already been started, and route them to the specific individuals responsible for remediating them.

**Blindspot Awareness:** Quickly identify the areas of your infrastructure that are not being monitored, leaving you exposed, and make adjustments leveraging integration with BMC Discovery.

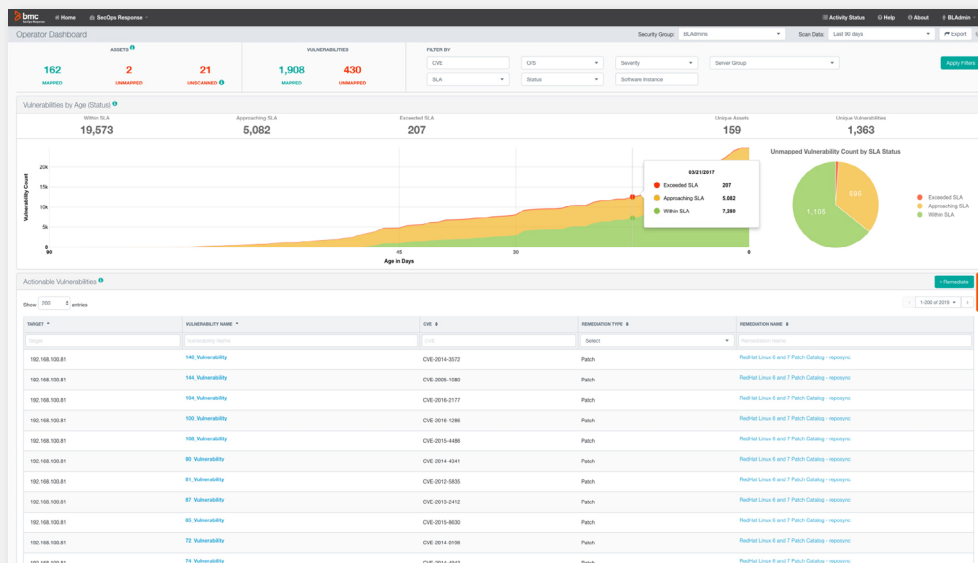
**Auto-Scan Import:** Save time and respond more quickly by auto-importing scan exports from Qualys, Nessus, and Rapid7.

**Streamlined Remediation Workflow:** Schedule your scan verification and remediation within the same workflow. Target agreed upon maintenance windows to minimize disruption.

**Patching & Compliance:** Combine with popular endpoint management systems, such as TrueSight Server Automation, TrueSight Network Automation, and Microsoft SCCM, to keep your infrastructure in peak condition by applying patches or configuration changes with ease, reducing downtime, and preventing potential security breaches.

## FOR MORE INFORMATION

To learn more about TrueSight Vulnerability Management, please visit [bmc.com/it-solutions/truesight-vulnerability-management](https://bmc.com/it-solutions/truesight-vulnerability-management)



 The Operator Dashboard provides a holistic view of all known threats.

## About BMC

BMC helps customers run and reinvent their businesses with open, scalable, and modular solutions to complex IT problems. Bringing both unmatched experience in optimization and limitless passion for innovation to technologies from mainframe to mobile to cloud and beyond, BMC helps more than 10,000 customers worldwide reinvent, grow, and build for the future success of their enterprises.

[www.bmc.com](https://www.bmc.com)



BMC, BMC Software, the BMC logo, and the BMC Software logo, and all other BMC Software product and service names are owned by BMC Software, Inc. and are registered or pending registration in the US Patent and Trademark Office or in the trademark offices of other countries. All other trademarks belong to their respective companies. © Copyright 2019 BMC Software, Inc.



\* 4 7 7 2 2 1 \*