

BMC TrueSight IT Data Analytics

Automate IT data collection and analysis to resolve problems faster, avoid outages, and improve quality of service while driving productivity

PRODUCT DESCRIPTION

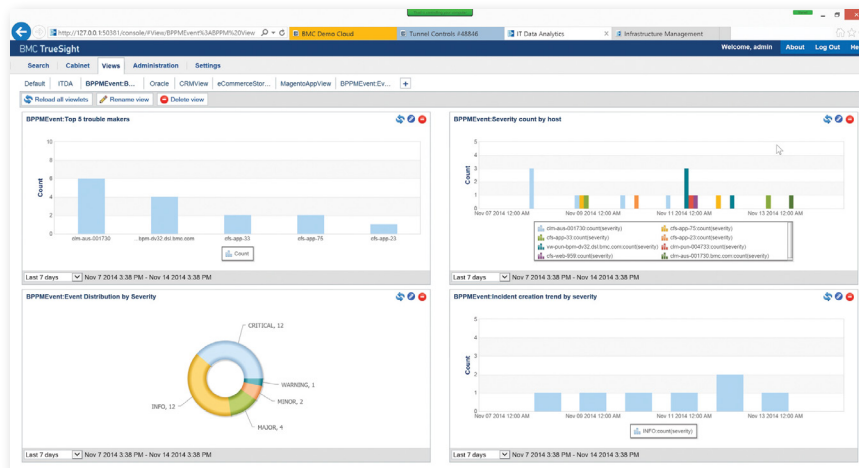
TrueSight IT Data Analytics enables you to share context across all BMC TrueSight solutions, and to correlate data from hundreds of data sources and disparate silos in a single pane of glass. TrueSight allows you to proactively identify and detect troublesome patterns on an ongoing basis and create alerts and reports to take action before end users are impacted.

BUSINESS CHALLENGE

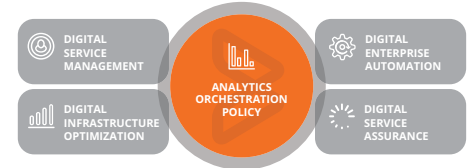
The business world is overrun with technologies that make rapid problem resolution and root cause analysis challenging. IT must digest scores of data produced by the devices in the data center and then analyze this growing set of data to identify and resolve problems. **Many businesses lack the proper tools to tap into the ultra large data sets**, leading to more difficulty and time identifying root causes, inefficient use of IT resources, and higher costs.

BMC SOLUTION

TrueSight IT Data Analytics combines the tightly integrated monitoring, event, and service-impact management components of TrueSight Operations Management, while correlating all IT operations data (e.g., metrics, event, and log data) and sharing and maintaining context for **effective IT operations workflow**. In addition, BMC IT Data Analytics utilizes existing TrueSight agent infrastructure: a single agent for log and monitoring data, along with centralized administration to **drastically lower TCO**.



Digital Enterprise Management



KEY FEATURES

- **Consolidate and connect data from all tiers in a single pane of glass** (e.g., OS, applications, storage, network devices, and machine generated anomalies) for enterprise-wide visibility
- **Automated cross-domain collection** offers continuous and real-time collection of all relevant data
- **Collect more data with automated collection of log and other machine data** (e.g., events, anomalies, and change records) with agent and agentless collection
- **Facilitate rapid deployment** with policy-based configuration using collection profiles for log files

KEY BENEFITS

- Get the solution **up and running in under one hour**
- Achieve **higher service availability**
- **Reduce MTTR** by significantly reducing troubleshooting times
- **Increase operational efficiency** by reducing manual effort
- **Lower operational expenses** with a unified monitoring and analytics agent
- Experience a **modernized user interface** and seamless user experience

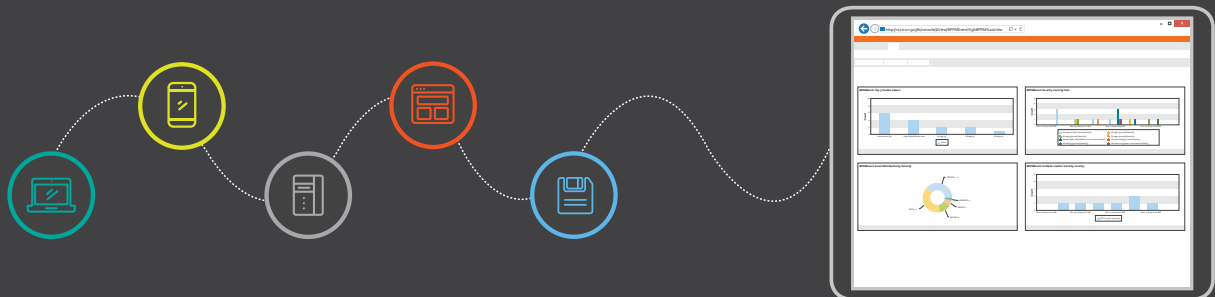
Easy at-a-glance view of log and event analytics with TrueSight IT Data Analytics

PRODUCT DETAILS

- Quickly detect, prioritize, diagnose, and resolve service issues to reduce mean time to repair (MTTR) and improve quality of service
- Get a holistic view of data center up time and resources
- Collect data via native IT Data Analytics agent, TrueSight Infrastructure Management agent, or agentless
- Save successful resolution patterns for future use with similar problems
- Take advantage of preconfigured content packs for common applications and operating environments including Microsoft®, Linux, Citrix®, Oracle®, and VMware®

FOR MORE INFORMATION

To learn more about BMC TrueSight IT Data Analytics please visit bmc.com/itanalytics



- TrueSight IT Data Analytics collects and analyzes IT data to resolve problems faster, avoid outages, and improve quality of service while driving IT productivity.

BMC is a global leader in innovative software solutions that enable businesses to transform into digital enterprises for the ultimate competitive advantage. Our Digital Enterprise Management solutions are designed to make digital business fast, seamless, and optimized from mainframe to mobile to cloud and beyond.

BMC – Bring IT to Life

BMC digital IT transforms 82% of the Fortune 500®.



BMC, BMC Software, the BMC logo, and the BMC Software logo, and all other BMC Software product and service names are owned by BMC Software, Inc. and are registered or pending registration in the US Patent and Trademark Office or in the trademark offices of other countries. All other trademarks belong to their respective companies. © Copyright 2016 BMC Software, Inc.

