



BMC CONTROL-M for Databases

BMC CONTROL-M for Databases introduces major cost savings by providing an interface that can execute workloads on multiple database types and hosts independently. It eliminates the burden of maintaining multiple database clients, drastically reducing installation and maintenance costs.

Key benefits

- » Integrates seamlessly with major database systems using self-contained interfaces
- » Allows interactive Scheduling of SQL scripts, stored procedures, SSIS packages and SQL statements
- » Eliminates complexity and errors by providing intuitive screens and job definition validation features that assure database job accuracy
- » Secures the authentication and connection criteria required for database job submission
- » Provides detailed execution information and enhanced post processing options that allow results analysis and automatic error recovery
- » Generates output of Oracle jobs in Comma Separated Value (CSV), XML and other formats without additional coding

Business Challenge

Every modern company's business information is managed by database systems and their integrity is essential to many applications and business services. With the dramatic increase in size and complexity of companies' database environments, database batch workloads are growing respectively and they often include interdependencies with other business applications. Managing these compound processes independently can be inefficient, costly and have high potential for errors.

The BMC Solution

BMC CONTROL-M for Databases allows you to integrate and automate database batch workloads from a single point of control. Defining new jobs is made easy due to a user interface that is based on interactive object selection, minimizing manual input and reducing user errors. Database jobs include stored procedures, scripts, SSIS objects and clear SQL statements.

Additionally, database processes can now utilize standard and advanced CONTROL-M capabilities such as enhanced security, auditing, post processing, operator alerts, integration with helpdesk applications, forecasting, and business service management.

Reducing Total Cost of Ownership

Many database processes that are submitted and managed from outside the database environment such as scripts, utilities, and other executables, involve significant maintenance efforts. They may also introduce security obstacles which can result in the exposure of the user's credentials. The BMC CONTROL-M for Databases Account Management utility provides a wizard based configuration tool that allows multiple database connections to be defined as logical accounts (profiles). Authorized CONTROL-M administration users can use the account management utility for the definition, configuration and validation of the accounts they manage. Each of the predefined accounts represents

specific DBMS connection criteria and user credentials that are used with every CONTROL-M for Databases job.

The accounts credentials are encrypted while account names and descriptions are available for users to select from when they define new database jobs.

BMC CONTROL-M for Databases introduces major cost savings by providing an interface that can execute workloads on multiple database types and hosts independently. It eliminates the burden of maintaining multiple database clients, drastically reducing installation and maintenance costs.

BMC CONTROL-M for Databases Account Management

Interactive Database Job Definition

BMC CONTROL-M for Databases' intuitive and interactive job editing form allows end users to select the relevant database objects, their attributes and parameters directly from the database system in real time, regardless of the target database type, physical location and the execution entity type selected.

BMC CONTROL-M for Databases jobs object types include:

SQL Script

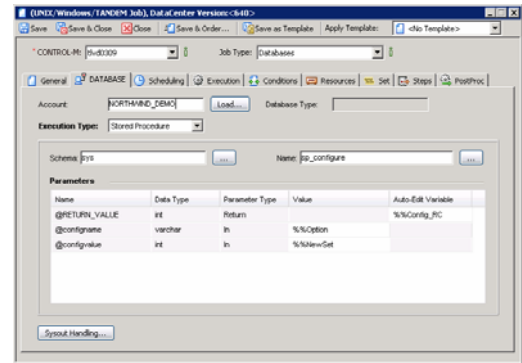
Interactive file system browsing for predefined SQL scripts.

Stored Procedures & Functions

Online retrieval of available stored procedures or functions with automatic extraction of any associated parameters, including their attributes and usage.

SQL Query

A SQL statement that can either be defined using the free statement entry editor or via the interactive query design tool that allows users to select the database objects, assign relationships and build the SQL statements gradually (step by step).



BMC CONTROL-M for Databases job editing form

Enhanced statement validation features such as syntax highlighting and preview option, that simulates the statement execution by displaying a sample of the output it generates, make the SQL statement definition a smooth and easy task that can be performed also by non database specialists.

SQL Server Integration Service (SSIS)

BMC CONTROL-M for Databases provides unique integration with SSIS packages, allowing users to interactively define and schedule any available ETL procedure as well as other functions the SSIS packages represent. Password protected SSIS packages and secured login credentials are maintained as part of the corresponding CONTROL-M for Databases account credentials.

Data Integration and Sharing Across Enterprise Workloads

BMC CONTROL-M Autoedit facility enables variables to be passed between workloads, allowing their dynamic execution based on data that is calculated and shared between them in real time. Autoedit variables are available for use throughout CONTROL-M for Databases job definition. Attributes such as stored procedure input and output parameter which can either be set by preceding jobs or updated for the use of jobs further down the business flow.

BMC CONTROL-M for Databases enables you to retrieve and store the actual output of successfully executed statements which can be utilized for different needs such as sharing its content with other workloads in the enterprise. The output generated can be produced in different formats including text, comma separated (CSV), XML and HTML. BMC CONTROL-M enhanced post processing capabilities also allow you to automatically email the generated output to the designated recipients.

The BMC Solution Advantage

BMC CONTROL-M for Databases provides secured integration of database related processes with enterprise workloads. It reduces database related learning curves of operation staff and eliminates human errors. Deployment of database software is no longer required as well as the on-going effort of maintaining homegrown queries and scripts. Overall it streamlines the integration of database processing with the entire datacenter, improving efficiency and reducing overall elapsed times.

BUSINESS RUNS ON I.T.
I.T. RUNS ON BMC SOFTWARE.

Business thrives when IT runs smarter, faster, and stronger. That's why the most demanding IT organizations in the world rely on BMC Software across both distributed and mainframe environments. Recognized as the leader in Business Service Management, BMC offers a comprehensive approach and unified platform that helps IT organizations cut cost, reduce risk and drive business profit. For the four fiscal quarters ended March 31, 2009 BMC revenue was approximately \$1.87 billion. Visit www.bmc.com for more information.