

Control-M Workload Archiving

Simplify job issue resolution, audit requests, and compliance reporting

PRODUCT DESCRIPTION

Control-M Workload Archiving is a data archiving solution that quickly delivers historical output and logs for problem analysis and audit compliance. It provides access to all interested stakeholders via powerful but simple to use interfaces. Flexible administrative options make it fast and easy to establish and automate policies for retaining specific types of data for their required retention periods.

BUSINESS CHALLENGE

Output and logs created by batch jobs, especially when problems occur with those jobs, are critical pieces of information required by on-call programmers, business analysts, and IT staff to resolve issues. This data is also required to satisfy increasing audit and governance regulations. **Organizations often find it challenging to gather and maintain this data in a way that is efficient to store, easy to search, and quick to retrieve.** Many practices, such as running backups or storing data in agent-specific file systems, are expensive to implement and maintain, and make finding the right information at the right time too difficult. This can result in audit failures and prolong repair times, thus degrading overall service delivery.

BMC SOLUTION

Control-M delivers the next wave of IT automation—Digital Business Automation—moving beyond traditional workload automation and adapting to modern IT technologies and processes. **With Control-M Workload Archiving’s ability to quickly search and analyze archived data, application developers and IT operations staff can work together to detect and address challenges supporting improved quality and on-time delivery of critical business services.** Furthermore, it also enables organizations to easily satisfy audit requirements to meet governance and compliance policies. Compared to existing output and log management products, Control-M Workload Archiving allows you to both reduce effort and lower costs.



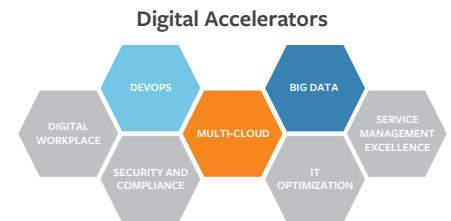
Simplify audits



Increase compliance



Shorten resolution times



KEY FEATURES

Control-M Workload Archiving simplifies audit and compliance processing with advanced data archiving.

- **“Compare” function speeds problem resolution** by quickly identifying key differences between executions
- **Retain output and logs with different retention policies**, which can be based on applications, platforms, or other criteria
- **Access historical output and logs** directly from within the Control-M client or Control-M Self Service
- **Archive all enterprise job output and log data** in a single, centrally available database
- **Locate required output and logs quickly** with advanced search capabilities

KEY BENEFITS

- **Reduce time to repair** by gaining immediate access to historical job output and log information
- **Retain historical output and logs to meet audit and governance requirements** with site-specific retention rules
- **Simplify problem analysis** with seamless access to historical output and logs from the same familiar interfaces used to manage workloads
- **Eliminate costs and effort** associated with external management of output and logs
- **Quickly locate required troubleshooting and audit information** with flexible search capabilities

PRODUCT DETAILS

Simplify audits and increase compliance: Producing the artifacts of past job executions is a common audit requirement. The required information can be viewed interactively from either the workload automation client or the Control-M Self Service web application. Control-M Workload Archiving makes it simple to export job execution history and provide the actual output and logs for the required jobs.

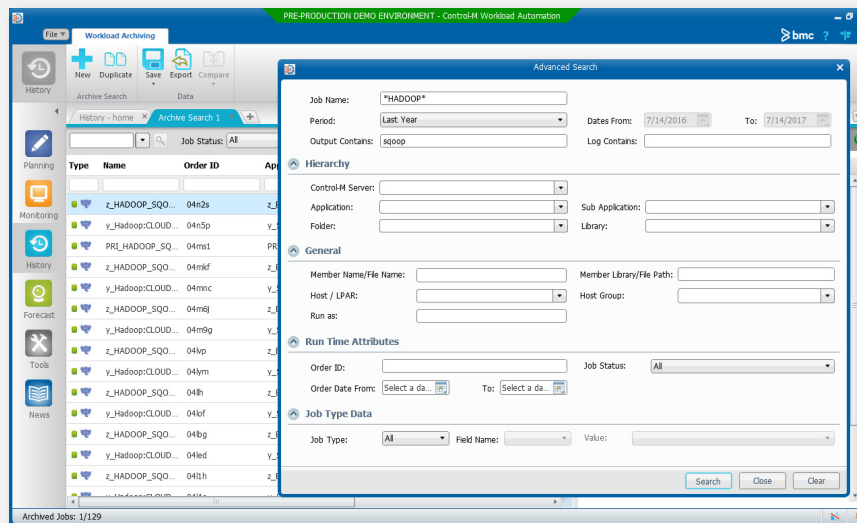
Shorten resolution times: Job output and Control-M log information is essential to analyzing job failures and for formulating proper corrective action by seeing how the failing job executed previously. Control-M Workload Archiving enables simple, centralized retention of historical job output and log data and makes it accessible directly from Control-M user interfaces.


Include developers in the process: When building or modifying batch applications, especially when correcting problems or addressing functionality gaps, developers can gain clearer insight into current problems and formulate better solutions quickly by having self-service access to historical job output. This speeds up development and testing and results in applications being deployed quicker with fewer errors.

Fully integrated with Control-M: As new job types are added or additional jobs are scheduled, its output is automatically archived without requiring any additional configuration.

FOR MORE INFORMATION

To learn more about Control-M Workload Archiving, please visit bmc.com/it-solutions/control-m-workload-archiving



 Simplify audit and compliance processing with advanced data archiving.

BMC is a global leader in innovative software solutions that enable businesses to transform into digital enterprises for the ultimate competitive advantage. Our Digital Enterprise Management solutions are designed to fast track digital business from mainframe to mobile to cloud and beyond.

BMC – Bring IT to Life

BMC digital IT transforms 82 percent of the Fortune 500.



BMC, BMC Software, the BMC logo, and the BMC Software logo, and all other BMC Software product and service names are owned by BMC Software, Inc. and are registered or pending registration in the US Patent and Trademark Office or in the trademark offices of other countries. All other trademarks belong to their respective companies. © Copyright 2017 BMC Software, Inc.

