

BMC Control-M Workload Automation for Cloud

Get even more value from automated, dynamic provisioning for ever-changing server workloads

PRODUCT DESCRIPTION

Control-M for Cloud brings workload automation to dynamic resource provisioning for VMware vSphere®, Amazon® EC2™, and BMC BladeLogic environments. It is an integration module that allows Control-M to monitor workflows against service requirements and connect with virtual or cloud services to automatically provision additional resources as needed, and decommission them as soon as the extra capacity is no longer required.

BUSINESS CHALLENGE

The cloud provides dynamic resource capacity but most organizations do not take full advantage because they manage cloud workload automation through static hardware configuration models. This approach produces the very problems cloud infrastructure is supposed to prevent: slow performance and outages when demand peaks, and underutilized resources during normal operating periods. Flexible resources require flexible resource management, which is a missing element in many cloud infrastructures.

BMC SOLUTION

Control-M for Cloud incorporates server configuration tasks into enterprise workflows to ensure that needed resources are always available and that invasive support activities never interfere with critical business workloads. Standard BMC Control-M jobs can now request the cloud service to perform on-demand provisioning and decommissioning of virtual or cloud resources in response to potential SLA breaches or changes in workload volume.

Digital Enterprise Management



KEY FEATURES

Control-M for Cloud makes managing cloud resources as flexible as the cloud.

- **It's proactive** – Cloud resources are provisioned and decommissioned automatically as needed to ensure resource constraints never disrupt essential digital services
- **It's part of a complete solution** – Now you can manage critical workload processes, regardless of where they are run, from a single point of control
- **It's optimized** – Control-M for Cloud has exclusive features for EC2, vSphere, and BladeLogic

KEY BENEFITS

- **Reduce capital and operating expenses** by dynamically provisioning virtual or cloud server resources for workload automation and reducing required hardware, floor space, and power
- **Meet service level and service delivery targets** by ensuring sufficient resources are available for batch workloads—even when faced with unexpected volume

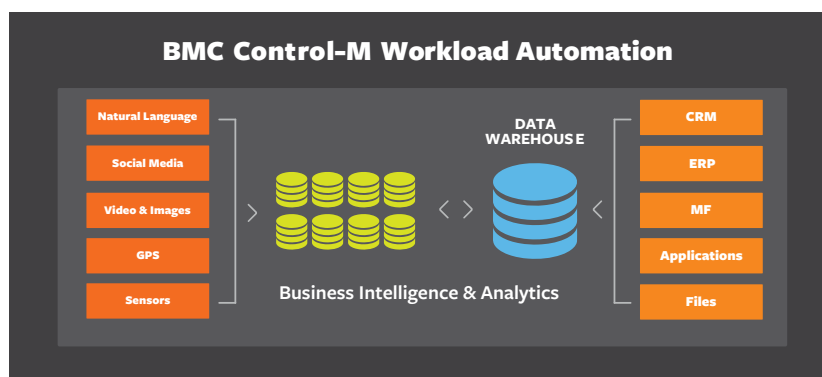


Figure 1: Control-M Workload Automation

PRODUCT DETAILS

Jobs can request their own resources: Control-M for Cloud incorporates server configuration tasks into enterprise workflows to ensure that invasive support activities never interfere with critical business services. **You can incorporate server configuration tasks, such as patching and auditing, into enterprise workloads** to ensure invasive activities like re-booting after a patch never collide with a critical business service.

BladeLogic highlights: BMC Control-M for Cloud provides all the job execution capabilities available from the BMC Server Automation console. It manages server configuration tasks, such as patching, auditing, or snapshots, so you can manage both conventional workload automation for business applications and server configuration tasks with a single solution.

VMware vSphere highlights: Maps operations for three function categories—Power Up, Snapshot, and Configuration—so Control-M for Cloud users can easily

manage common functions like powering virtual machines on and off, taking snapshots, cloning VMs, and deploying them from templates.

Amazon EC2 highlights: BMC Control-M for Cloud automates the functions related to managing instances provided by EC2 of Amazon's AWS console.

Control-M for Cloud adapts to users, so users do not have to adapt to it. **Users create jobs and review presented information with a wizard-like form** that has been customized for the BMC BladeLogic, VMware vSphere, and Amazon EC2 environments. The familiar interface reduces the time to value and helps users quickly incorporate cloud workloads into their management environment.

FOR MORE INFORMATION

To learn more about BMC Control-M Workload Automation, please visit bmc.com/control-m

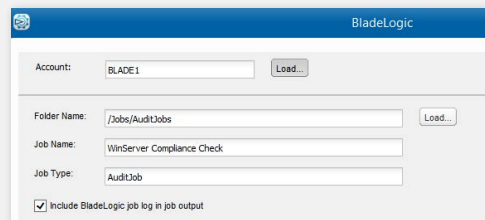
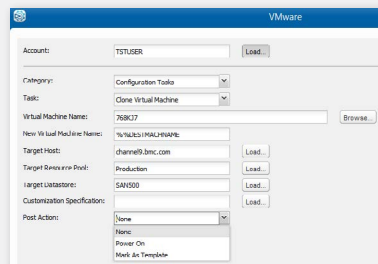



 Figure 2: BMC BladeLogic Job Type



 Figure 3: VMware Job Type

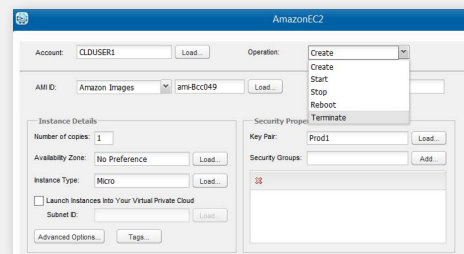


 Figure 4: Amazon EC2 Job Type

BMC is a global leader in innovative software solutions that enable businesses to transform into digital enterprises for the ultimate competitive advantage. Our Digital Enterprise Management solutions are designed to make digital business fast, seamless, and optimized from mainframe to mobile to cloud and beyond.

BMC – Bring IT to Life

BMC digital IT transforms 82% of the Fortune 500®.



BMC, BMC Software, the BMC logo, and the BMC Software logo, and all other BMC Software product and service names are owned by BMC Software, Inc. and are registered or pending registration in the US Patent and Trademark Office or in the trademark offices of other countries. All other trademarks belong to their respective companies. © Copyright 2016 BMC Software, Inc.

