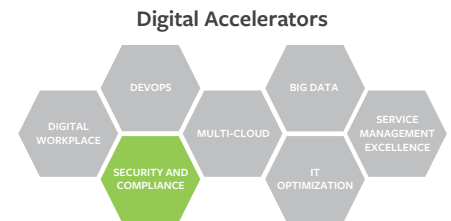


BladeLogic Server Automation

Maintain server compliance and accelerate IT Ops productivity by up to 200%



PRODUCT DESCRIPTION

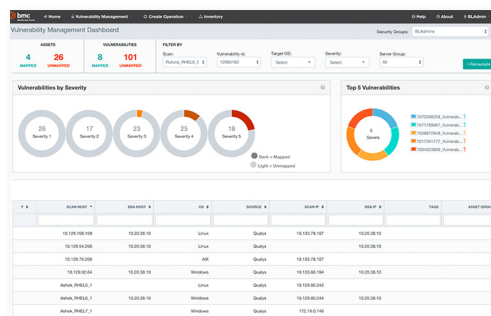
BladeLogic Server Automation is the industry-leading solution for automated management, control, and enforcement of server configuration changes in the data center and the cloud.

BUSINESS CHALLENGE

All mission critical applications depend on healthy data center servers to keep the business ahead of the competition. **If IT takes too long to provision, configure, or update servers, then the business is at risk from security vulnerabilities of services deployed on non-regulated shadow IT or may face costly fines for non-compliance.** With the complexity of a heterogeneous, virtual, and cloud server environment, IT staff struggle just to meet SLAs for uptime and stability. Manual efforts are labor-intensive, error-prone, and simply not scalable. Expensive, highly-skilled administrators waste time on homegrown, script-based approaches with limited, temporary results.

BMC SOLUTION

BladeLogic Server Automation provides a policy-based approach for IT administrators to manage their data centers with greater speed, quality, and consistency. Broad support for all major operating systems on physical servers and leading virtualization and cloud platforms lets IT install and configure server changes with ease. Rich out-of-the-box content helps IT automate continuous compliance checks and remediation for regulatory requirements. **Now IT staff can build, configure, and enforce compliance faster and more reliably.** With a simplified web portal, the IT operations team can increase the server to admin ratio, gain productivity, complete audits swiftly, and quickly respond to increasing business demands.



KEY FEATURES

BladeLogic Server Automation helps admins provision, configure, patch, and maintain physical, virtual, and cloud servers.

- **Compliance and risk mitigation** – Full cycle of system discovery, monitoring, remediation, and integrated change control, providing continuous compliance with out-of-the-box integration with BMC Remedy ITSM suite
- **Full lifecycle management** – Focal point of control for the entire server lifecycle, simplifying compliance, provisioning, configuration, patching, and reporting
- **Advanced built-in security** – Granular role-based access control system that reduces the risk of misconfiguration and improves systems stability
- **Abstracted simplified management** – Enable full-stack layered provisioning for rapid, automated resource allocation
- **Maintenance windows** – Schedule jobs to run in approved maintenance windows for managed servers

KEY BENEFITS

- **Increase speed** – Maintain compliance twice as fast with pre-configured compliance policies for detection and enforcement
- **Reduce risk** – Lower mean time to repair (MTTR) and increase IT efficiency by 87% with an intelligent, closed-loop for automated remediation
- **Lower costs** – Slash provisioning time from days to hours with automated provisioning

Quickly take action against vulnerabilities.

PRODUCT DETAILS

Threat Remediation: Combine with SaaS-based BMC SecOps Response Service for an unprecedented security and compliance solution. Intuitive dashboards automatically link vulnerabilities to identified patches and create an attack plan to deploy countermeasures on demand.

Compliance: Simplify governance with role-based access control, pre-configured policies for CIS, DISA, HIPAA, PCI, SOX, NIST, and SCAP, integrated documentation, and remediation through repair, rollback, or configuration updates.

Provisioning: Provision server configurations based on a broad set of supported approaches such as unattended installs and image-based, script-based, or template-based provisioning for physical, virtual, and cloud-based data centers.

Configuration: Enable administrators to eliminate complexity by consistently managing change and configuration activities across a broad range of server environments with one tool.

Patching: Keep your infrastructure in peak condition by applying patches with ease, reducing downtime, and preventing potential security breaches.

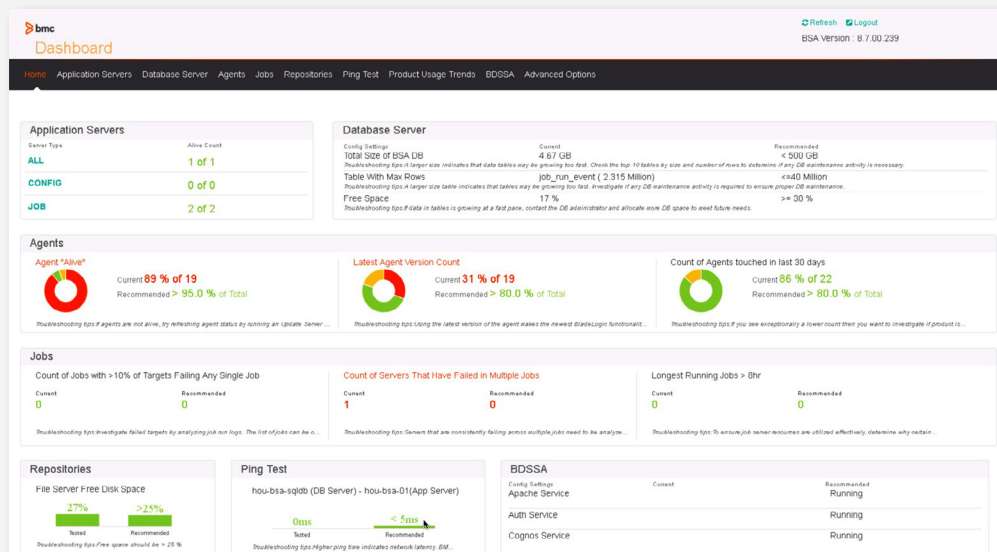
Out-of-the-box Support:


- Enterprise operating systems include Windows®, Linux®, and UNIX®.
- Virtualization technologies from VMware, Microsoft, Red Hat, Citrix, IBM®, and Oracle®
- Integrations with BMC solutions for application discovery, full-stack configuration, incident and change management
- Integrations with open source vendors like Chef, Puppet, and Docker

Reporting: Cut the time required to assess the impact of change or complete an audit with views for compliance, inventory, provisioning, patching, and deployment, including automation value dashboards.

FOR MORE INFORMATION

To learn more about BladeLogic Server Automation, please visit bmc.com/it-solutions/bladelogic-server-automation



 Monitor the health of servers by server type, agent, job, and more.

BMC is a global leader in innovative software solutions that enable businesses to transform into digital enterprises for the ultimate competitive advantage. Our Digital Enterprise Management solutions are designed to fast track digital business from mainframe to mobile to cloud and beyond.

BMC – Bring IT to Life

BMC digital IT transforms 82 percent of the Fortune 500.



BMC, BMC Software, the BMC logo, and the BMC Software logo, and all other BMC Software product and service names are owned by BMC Software, Inc. and are registered or pending registration in the US Patent and Trademark Office or in the trademark offices of other countries. All other trademarks belong to their respective companies. © Copyright 2017 BMC Software, Inc.

