



# BMC Control-M for Backup

Protect your data and achieve your storage management goals while meeting your business workload service levels by integrating Symantec NetBackup™ and IBM® Tivoli Storage Manager processing with your production workload

## Key Benefits

- » Seamlessly combine backups with business workload without having to manage arbitrary, static maintenance windows
- » Gain end-to-end visibility of business processes that include backups
- » Reduce the amount of tape media used and the number of volumes required at offsite storage by eliminating duplicate backups
- » Understand potential relationship and impact of backups on business workload
- » Manage backup and business workload from a single, graphical tool

## Business Challenge

Backups are an integral part of business continuity and data protection policies. Frequently, backups must run during isolated maintenance windows to avoid any collision between backup processing and production applications. However, due to the dynamic nature of IT environments, changes in priority or fluctuating processing loads make it difficult to manage static maintenance windows. Contributing to these challenges is the lack of visibility for IT Operations of backup processing and similarly lack of awareness of production workload for backup administrators.

## The BMC Solution

BMC Control-M for Backup lets you leverage the powerful scheduling capabilities of BMC Control-M Workload Automation to schedule and monitor backups in harmony with business processes. You can build dependencies or mutually exclusive relationships between business workload and backup activity. This eliminates the need to carve out large, static maintenance windows that introduce complexity and may lead to SLA breaches.

## Manage backups together with business workload

BMC Control-M for Backup uses standard interfaces provided by Symantec NetBackup™ and Tivoli Storage Manager to manage backups just as they are managed from their native consoles. This approach enables both IT Operations and Backup Administrators to gain or maintain full visibility into the progress of backups from the user interface of their choice while offering the advantages of fully integrated backup and business workload.

BMC Control-M for Backup provides the key operational capabilities necessary to manage backups. Backup jobs are frequently composed of multiple “subordinate” or “child” jobs that must be monitored as one large composite process. BMC Control-M for Backup submits the initial job that triggers the backup process and then also detects and monitors all the subordinate jobs that perform the backups. For example, if a NetBackup policy includes dozens of hosts, each backed up by a separate NetBackup “child”, BMC Control-M for Backup monitors all the processes and the success or failure of the entire collection determines the overall success of the backup.

This approach is also applied to handling the job’s output which is now made available within BMC Control-M just as with any other job type. BMC Control-M for Backup gathers the output of all subordinate jobs, shows their job details and makes the output available for viewing or for post processing during job analysis.

Job Name	Status	Start Time	End Time	Parent Job	Child Job
Backup Job	Success	2010-01-01 00:00:00	2010-01-01 00:00:00		
Child Job 1	Success	2010-01-01 00:00:00	2010-01-01 00:00:00	Backup Job	Child Job 1
Child Job 2	Success	2010-01-01 00:00:00	2010-01-01 00:00:00	Backup Job	Child Job 2
Child Job 3	Success	2010-01-01 00:00:00	2010-01-01 00:00:00	Backup Job	Child Job 3
Child Job 4	Success	2010-01-01 00:00:00	2010-01-01 00:00:00	Backup Job	Child Job 4
Child Job 5	Success	2010-01-01 00:00:00	2010-01-01 00:00:00	Backup Job	Child Job 5
Child Job 6	Success	2010-01-01 00:00:00	2010-01-01 00:00:00	Backup Job	Child Job 6
Child Job 7	Success	2010-01-01 00:00:00	2010-01-01 00:00:00	Backup Job	Child Job 7
Child Job 8	Success	2010-01-01 00:00:00	2010-01-01 00:00:00	Backup Job	Child Job 8
Child Job 9	Success	2010-01-01 00:00:00	2010-01-01 00:00:00	Backup Job	Child Job 9
Child Job 10	Success	2010-01-01 00:00:00	2010-01-01 00:00:00	Backup Job	Child Job 10

Figure 1. Status of job and all “children”

The complex job structure for backups must also be taken into consideration when terminating and re-running backup processes. BMC Control-M for Backup provides the ability to kill a backup which will terminate the “parent” job and all of its subordinate jobs. Furthermore, you can rerun the entire job or only the specific portions that have failed.

## Graphical wizard for building Backup jobs

BMC Control-M for Backup provides graphical job definition forms for Symantec NetBackup and Tivoli Storage Manager to simplify the process of building or modifying backup jobs. As with all other Control-M application integration, you first define a connection profile that allows Control-M to locate and connect to the

backup solution. This step is also done with a graphical wizard opened from the Control-M Configuration Manager. Once a connection profile is selected, Control-M allows you to select values for fields such as Backup Type, Policy and Schedule from lists of values retrieved dynamically from the backup solution based on user-provided masks and wild card characters. You can also select processing options for retrieving output and managing reruns from pull-down lists. This approach eliminates syntax and typing errors and makes it easy to define backup jobs without requiring in-depth knowledge of the backup solution.

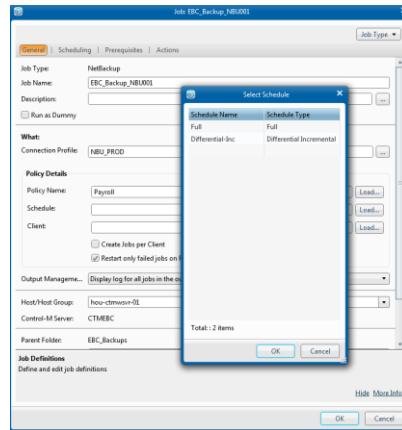


Figure 2: Job Details with Selection List

All BMC Control-M capabilities including forecasting, version management and find & update are available for backup jobs just like for all other Control-M job types.

## Intelligent rerun reduces media costs

Individual backup jobs frequently process multiple servers and multiple backup jobs write their output to a single backup medium such as tape. When backups fail, it is frequently common practice to simply re-run the entire job thus duplicating backup files on multiple tapes. This results in poor utilization of media and the need to increase the number of physical media that is moved to offsite locations.

By providing the ability to rerun backup jobs for only the failed steps or servers, BMC Control-M for Backup can increase utilization of backup media and reduce the number of media that has to be moved offsite and returned for DR test or in the case of a true recovery requirement.

## Supported Releases

BMC Control-M for Backup supports the following backup solutions:

- » Symantec NetBackup™ versions 7.5 and 7.1
- » IBM® Tivoli Storage Manager versions 6.x and 5.5

## Part of a Comprehensive Solution

BMC Control-M for Backup is an application integration component of BMC Control-M Workload Automation, an enterprise workload automation solution that integrates the management of critical workload processes from a single point of control. With BMC Control-M, you:

- » Gain a faster, more cost-effective way to manage workload with a unique architecture that supports growth and provides unmatched integration
- » Reduce the number of failure points and delays caused by manual processes with a single, unified scheduling interface — regardless of platform
- » Eliminate your reliance on multiple toolsets and staff resources with automated scheduling processes that help you manage priorities according to business needs
- » Reduce your software footprint and deployment by as much as 80 percent with agentless scheduling

## For More Information

To learn more on BMC Control-M, please visit [www.bmc.com/control-m](http://www.bmc.com/control-m).

### BUSINESS RUNS ON I.T. I.T. RUNS ON BMC SOFTWARE.

Business runs better when IT runs at its best. Tens of thousands of IT organizations around the world -- from small and mid-market businesses to the Global 100 -- rely on BMC Software (NASDAQ: [BMC](http://BMC)) to manage their business services and applications across distributed, mainframe, virtual and cloud environments. BMC helps customers cut costs, reduce risk and achieve business objectives with the broadest choice of IT management solutions, including industry-leading Business Service Management and Cloud Management offerings. For the four fiscal quarters ended March 31, 2013, BMC revenue was approximately \$2.2 billion.