

BMC Performance Assurance v7.4.00

Leadership in data center virtualization and consolidation

KEY BENEFITS

- > Effectively analyze current and historical performance of both physical and virtual server environments to enable prediction of future resource capacity needs
- > Optimize capacity needs against changing business requirements and financial constraints
- > Provide performance and capacity reports to decision makers through an intuitive Web interface
- > Identify and correct performance problems weeks or months in advance of impacting business service levels

BMC Performance Assurance v7.4.00 includes new integrations to help you manage IT from the perspective of the business. With clear linkages to other BMC solutions, including the BMC Atrium CMDB, this new release ties capacity requirements to the overall goals of your business. In addition, with support for an increased number of platforms, including Linux®, Microsoft, and VMware, it also helps you derive the maximum value from your existing investments.

OVERVIEW

The costs of supporting today's data center goes beyond mere hardware acquisition. Power, cooling, and floor space (among other considerations) must all be included in total cost of ownership. BMC Performance Assurance provides an effective methodology for reducing costs by exploiting virtualization and partition technologies. It enables an effective capacity management process to ensure that the capacity of the IT infrastructure matches evolving business demands in a cost-effective and timely manner.

With a proven methodology for server consolidation, BMC Performance Assurance allows you to choose the virtualization or partitioning technologies that best fit your environment and minimize risks to service levels through implementation and production deployment.

SOLUTION ENHANCEMENTS

BMC Performance Assurance v7.4.00 adds new feature support for:

Agent Platforms

- > New data collection support for the latest Red Hat release, EL 5.0
- > New data collection support for the latest SUSE release, SLES 10.0

Microsoft Virtual Servers 2005

- > Collect performance metrics at both the physical system and virtual machine levels
- > View physical system and virtual machine configuration and performance statistics using the BMC Performance Perceiver Web interface

VMware ESX v3.0.1

- > Support VMware's latest ESX server release through data collection, analysis, reporting, and "what if" prediction capabilities at the host and virtual machine levels

Solaris Containers

- > Benefit from new support for Solaris global and non-global zones
- > Collect CPU, paging input/output (I/O), and total I/O metrics at the non-global zone level
- > View zone graphs in the BMC Performance Perceiver Web interface
- > View process data at the global zone level, as well as top 30 processes by zone
- > Create workloads at both the zone and the project level for use in analysis and reporting

AIX MicroPartitioning

- > Gain a deeper level of analysis and reporting through additional support for AIX share processor pools

Tighter BSM Integration

- > Leverage the bidirectional integration between BMC Performance Exception Detector and the BMC Atrium CMDB
- > Launch BMC Performance Perceiver performance graphs from the BMC Service Impact Manager Impact Explorer to streamline incident/problem resolution

ADDITIONAL FEATURES

- > Continued integration with Performance Surveyor (from BMC Partner, Solutions Lab Inc.) streamlines capacity analysis and reporting functions.
- > Under-the-cover reliability and supportability improvements include:
 - Concurrent Oracle population from UNIX® console
 - Configurable data processing throttle

ALIGNMENT WITH BEST PRACTICES

BMC Performance Assurance incorporates customer-proven best practices that map directly to IT Infrastructure Library (ITIL®) capacity management processes. It provides both real-time and historical analysis of performance data to identify and resolve application resource bottlenecks and performance issues. Advanced statistical analysis identifies trends and abnormal patterns in service utilization before impacting service levels. Unique predictive modeling capacity provides the ability to plan for changes in service requirements and the ability to optimize the deployment of consolidated servers on partitioned or virtualized systems.

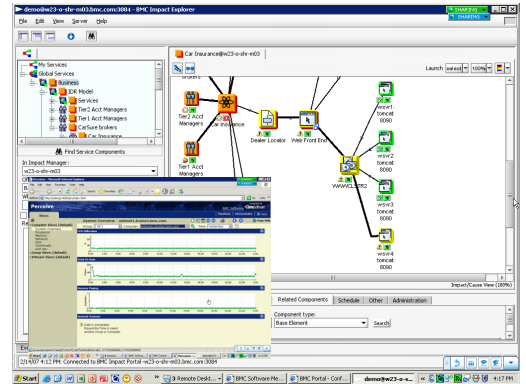


Figure 1. New BSM Integration – “Launch-in-context” Perceiver capacity views from BMC Impact Explorer

ABOUT BMC SOFTWARE

BMC Software delivers the solutions IT needs to increase business value through better management of technology and IT processes. Our industry-leading Business Service Management solutions help you reduce cost, lower risk of business disruption, and benefit from an IT infrastructure built to support business growth and flexibility. Only BMC provides best practice IT processes, automated technology management, and award-winning BMC Atrium technologies that offer a shared view into how IT services support business priorities. Known for enterprise solutions that span mainframe, distributed systems, and end-user devices, BMC also delivers solutions that address the unique challenges of the midsized business. Founded in 1980, BMC has offices worldwide and fiscal 2006 revenues of more than \$1.49 billion. Activate your business with the power of IT. www.bmc.com.

TIE-IN TO BSM

BMC Performance Assurance integrates with BMC Event Manager, BMC Service Impact Manager, BMC Remedy Service Desk, and the BMC Atrium CMDB to minimize the downtime of IT components and identify failures before they impact IT services. Through automated capacity exceptions in BMC Performance Assurance, IT operations can automatically identify impending performance disruptions before they occur, thereby reducing incidents and ensuring service levels.

PART OF A COMPREHENSIVE SOLUTION

The following BMC Performance Assurance products are available to meet your capacity management needs:

- > **BMC Performance Assurance for Servers** provides comprehensive management of server performance and capacity, with the ability to properly size, consolidate, and understand current and future capacity and performance through response-time modeling of business applications to optimize performance.
- > **BMC Performance Analysis for Servers** provides capacity management staff and business stakeholders with high-level and in-depth performance analysis and reporting capabilities to explain where their performance and capacity levels are today.
- > **BMC Performance Assurance for Virtual Servers** provides comprehensive management of VMware performance and server capacity, with the ability to properly size, consolidate, and understand the current and future capacity and performance of business applications, while also optimizing the performance of virtual machines through a view of overall system use. In addition, it reduces risks while accelerating the move from physical to virtual, and manages physical and virtual complexities from the perspective of application response time, business cycles, and resource contention.



To learn more about how BMC can help activate your business, visit www.bmc.com or call (800) 841-2031

BMC, BMC Software, and the BMC Software logo are the exclusive properties of BMC Software, Inc., are registered with the U.S. Patent and Trademark Office, and may be registered or pending registration in other countries. All other BMC trademarks, service marks, and logos may be registered or pending registration in the U.S. or in other countries. Oracle is a registered trademark of Oracle Corporation. ITIL is a registered trademark, and a registered community trademark of the Office of Government Commerce, and is registered in the U.S. Patent and Trademark Office. UNIX is a registered trademark of The Open Group. Linux is the registered trademark of Linus Torvalds in the U.S. and other countries. All other trademarks or registered trademarks are the property of their respective owners. © 2007 BMC Software, Inc. All rights reserved.

